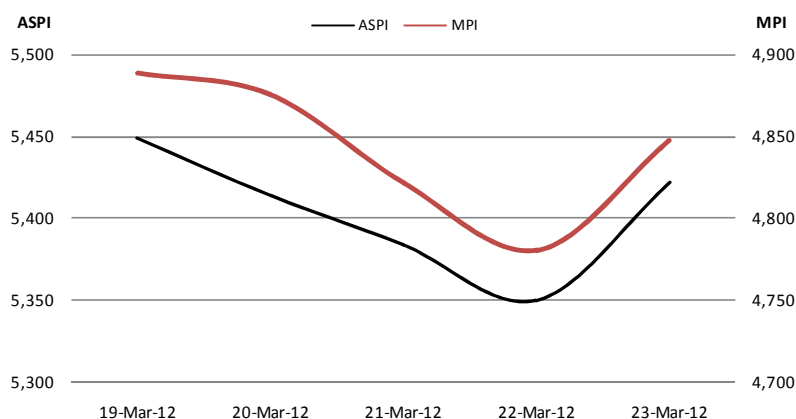


Weekly Market Summary 23.03.2012

(A member of the Bartleet Group)
"BARTLEET HOUSE" P. O. Box 9, 65 Braybrooke Place, Colombo 2, Sri Lanka
Tel: +94 11 2332417-9, +94 11 5260200 Fax: +94 11 2434985
E-mail: research@bartleetstock.com Web: www.bartleetstock.com

Market loses 0.49% WoW



Markets again saw a week of losses as the markets started declining from the early part of the week. The interesting part of the week was the spurt in JKH. The volumes in the market remained on the lower side this week. However the week ended on a positive note on the back of gains witnessed in the markets on Friday, with the All Share Index gaining 72 points on Friday to close the week at 5422.33.

If we look at the technical chart below we will find that the Index is falling along the trend line drawn in the chart and this week's candle is exactly near the upper boundary of the falling channel.

There can be two possibilities from here on one is that we break out of this falling channel and reverse the falling trend and the other is that we continue to slide along the falling channel which will mean more downside for the Index. It is seen that Trends continue longer than most people anticipate, but one day end suddenly.

Market Snapshot

ASPI	Opening	5,449.05
	Closing	5,422.33
MPI	Opening	4,864.25
	Closing	4,847.86
TURNOVER	(LKR mn)	5,416
VOLUME	Shares (mn)	139
FOREIGN PURCHASE	(LKR mn)	3,331
FOREIGN SALES	(LKR.mn)	937
NET IN-FLOW/ (OUT-FLOW)	(LKR.mn)	2,394

Trade online
Log on to:

www.bartleetstock.com

BARTLEET RELIGARE SECURITIES - WEEKLY SUMMARY

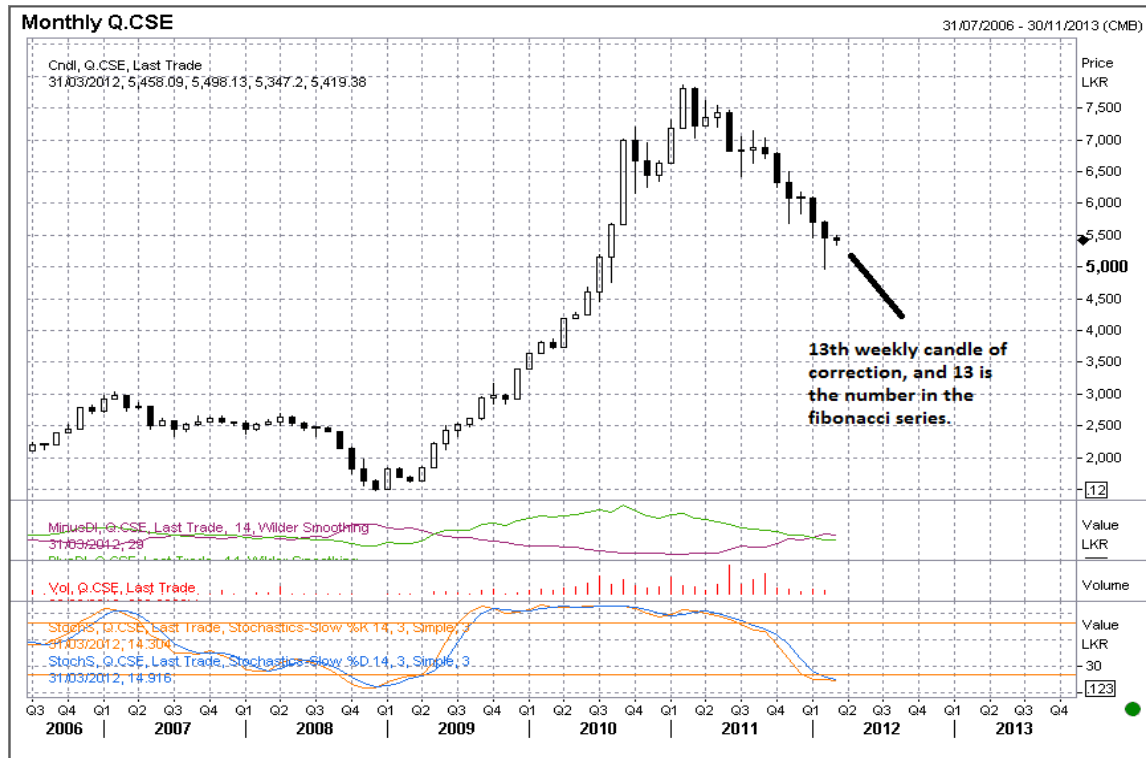
So let us emphasize on the Fibonacci series, which is a very important tool for predicting trend reversals. On the monthly charts we are in the 13th month of correction and 13 happen to be the number in the Fibonacci series. Markets have a high probability, tendency of reversing on a Fibonacci number or ratio in all degrees of trend. Fibonacci numbers alert investors of a potential trend reversal.

If we look at the trend in the lower degree that is in weekly charts in this also we are in to the 55th week of correction, now 55 is also the number in the Fibonacci series. Here trends of two different time periods coincide and the probability of a change in trend becomes higher, another interesting point is that the last day of the week ended with strong gains, so if the trend gets reversed from here then it will mean a change in trend for at least a medium term perspective and that will offer a lot of good medium term Investment opportunities. In case the trend doesn't change then we will continue to decline further till the next number in the Fibonacci series. However for the trend to change we will have to breakout from the falling channel. The All share index has support at 5300 and then at 5200, the resistance for the Index comes at 5500 and then at 5600.

ALL SHARE INDEX WEEKLY CHART



ALL SHARE INDEX MONTHLY CHART



Economic and General News

Resolution on SL adopted, 24-15

- The US sponsored resolution on Sri Lanka at the 19 session of the UNHRC in Geneva was adopted with 24 countries voting for & 15 against 8 abstained
- The UN's top human rights body has passed a resolution calling on SL to properly investigate alleged war crimes during its 26-year conflict with the Tamil Tigers
- Sri Lanka and its allies on the 47-member council had fiercely resisted the resolution saying it unduly interfered in the country's domestic affairs and could hinder its reconciliation process
- The resolution is currently up for debate in the United Nations Human Rights Convention in Sri Lanka

SL Government delays payment to Construction companies

- The government has delayed the outstanding payments to the construction industry amounting to LKR 15bn owed to medium and small term contractors
- This has resulted in working capital issues for the industry creating problems for local contractors to bid for big projects and receive bank loans
- Approximately 90 % of raw materials for the construction industry are imported and the devaluation of the LKR will increase of the costs by ~10%-15%, according to the Chamber of Construction Industry. In addition, the recent fuel hike will also add to costs

Local Ceramic Industry asks for cess

- Local ceramic manufacturers are calling upon the Government to re-impose the cess of LKR 100 per kg of imported ceramics to stop inferior imports.
- The last budget imposed a cess of LKR 100 per kilogram of imported ceramics was imposed in the last Budget but it was reduced to LKR 50 per kilogram.
- Most of the ceramic export markets are going through recession and therefore exports have reduced making the local market the only alternative. Demand in the local market is good, especially in the North and the East.
- Internationally, the industry is competing with Bangladesh, China and Indonesia
- The cost of production of Sri Lankan products are higher compared to other competing countries due to the high energy cost. The Ceramic industry is high energy consuming and energy cost accounts for more than 50%.
- In the last 18 months, energy costs have increased by ~70% in Sri Lanka.

Middle Eastern, energy crisis may hit exports

- The devalued rupee has helped boost exports but the crisis in Iran and Syria is a looming threat to exports
- Tea exporters said that the current auction prices are good but the uncertainty in key export destinations such as Iran and Syria is a huge blow to exports
- The Middle East accounts for a major share of Sri Lanka's exports and it is a large buyer of Ceylon Tea
- Sanctions against Iran and the instability in the region have impeded trade with many countries in the Middle East
- The high cost of energy adversely affects many energy intensive export industries such as the ceramics industry
- The rising cost-of-living spurred by the depreciation of the rupee affects labour intensive sectors such as tea and rubber
- Export revenue would reach USD 12 bn by the end of this year and USD 15bn by 2015.
- Sri Lanka imports over 90% of its commodities widening trade deficit with a balance of payment problem

Sri Lanka February tea output falls

- Tea production in Sri Lanka in February 2012 fell compared to last year with much of the fall coming from low grown types harvested by small farmers
- Total tea production fell 0.6% YoY to 21.98mn kg in the month of February.
- However, tea production during January - February 2012 period was up 4.7% to 45.3mn kg compared to 2011.
- Output of high grown varieties of tea was up 0.7% to 5.1mn kg in February and production of those grown at medium elevations was also up.
- But low grows fell 8.3% YoY to 12.9mn kg in February 2012. Low grown teas are produced mainly by small holders who have been hit hard by lower demand from the Middle East, a key market, owing to political turmoil there.

EPF books LKR 800mn capital gain from the JKH deal

- The Employee Provident Fund booked a capital gain of LKR 800mn by selling off 8.85% of its stake in blue chip conglomerate JKH at LKR 194 per share.
- The stake was acquired by the Malaysia's Khazanah Nasional Bhd which is chaired by the Malaysian Prime Minister.
- CIMB and the Bank of America and Merrill Lynch were the joint advisors to Khazanah's deal that took place on Friday.
- The deal is said to be the second largest on the CSE (Biggest was Malaysia's Maxis Group's acquisition of Sri Lanka Telecom)
- Khazanah is now the third largest shareholder of JKH behind Captain and Janus Overseas Fund

BARTLEET RELIGARE SECURITIES - WEEKLY SUMMARY

Sri Lanka sells USD 72mn 3-year bonds

- Sri Lanka sold USD 72mn of 3 year bonds at six-month Libor + 385 basis points and USD 12mn of 4 year bonds at LIBOR +415 basis points
- The USD six-month LIBOR rate was 0.74%.
- The government offered Sri Lanka Development Bonds (SLDBs) of USD 35mn in 3-year tenor and USD 10mn in 4-year tenor to eligible investors for subscription through competitive bidding.
- The offer was opened from March 12 to 19 for bidding with the settlement on March 26, 2012.
- Both foreign and local commercial banks subscribed bids at the auction
- The offer was oversubscribed by 2.2 times with total bid received amounting to USD 100mn.

90 new hotel projects worth \$ 1.4 b awaiting nod

- Sri Lanka Tourism disclosed that 90 new hotel projects with an investment of USD 1.4bn and 2,242 rooms are being processed for approval.
- The dedicated clearing facility Unit for National Investment in Tourism providing one stop service had already approved 99 hotel projects for construction.
-
- These, along with those being processed, bring the total to 189 applications, commanding a room strength of 10,750 with an envisaged investment of USD 1.78bn, Sri Lanka Tourism Chairman Dr. Nalaka Godahewa said.

Corporate News

Sri Lanka Aitken Spence 5% stake bought by foreign investor

- A 5% stake in Aitken Spence Plc was bought by a foreign buyer from the Employees' Provident Fund amounting to 20.5mn shares.
- The deal was executed in three off-market deals totalling LKR 2.36bn at LKR 115.00.

Mackwoods Energy IPO oversubscribed

- Mackwoods Energy Ltd.'s LKR 350mn worth Initial Public Offering (IPO) was oversubscribed on the official opening day.
- The company offered 25 mn shares at LKR 14.00 each.
- The final subscription amount as well as the basis of allotment will be notified next week.

BARTLEET RELIGARE SECURITIES - WEEKLY SUMMARY

Weekly Crossings :

	Code	No of Crossings	Total Shares	Price (LKR)
Monday	SPEN	3	20,531,452	115.00
	JKH	6	1,500,000	200.00
	NDB	1	509,500	123.00
Tuesday	JKH	2	495,000	200.00
Wednesday	LWL	1	500,000	75.00
Thursday	NONE			
Friday	JKH	2	1,129,692	191.50
	BLUE	1	7,959,600	8.00
	VFIN	1	989,700	39.00

Top gainers and losers in the BRS stocks in focus are:

GAINERS					LOSERS				
STOCK	OP. PRICE	CL. PRICE	CHANGE	%	STOCK	OP. PRICE	CL. PRICE	CHANGE	%
KGAL	91.50	103.10	11.60	12.7%	HDFC	89.70	70.40	(19.30)	-21.5%
SUN	18.00	19.90	1.90	10.6%	CHL(X)	60.10	53.50	(6.60)	-11.0%
SEYB	61.60	65.50	3.90	6.3%	LWL	79.00	71.40	(7.60)	-9.6%
DFCC	106.00	112.30	6.30	5.9%	TPL	25.40	23.00	(2.40)	-9.4%
SHOT	24.10	25.50	1.40	5.8%	EDEN	33.20	30.30	(2.90)	-8.7%

BARTLEET RELIGARE SECURITIES - WEEKLY SUMMARY

	MONDAY	TUESDAY	WEDNESDAY	THURSDAY	FRIDAY
All share index	5,449.46	5,414.02	5,384.10	5,349.70	5,422.33
Milanka Price Index	4,889.08	4,875.92	4,821.87	4,780.82	4,847.86
Market Turnover -(LKR.)	3,131,109,914	627,415,209	376,150,591	354,061,069	926,895,189
Equity Turnover -(LKR.)	3,131,109,914	627,415,209	376,150,591	354,061,069	926,895,189
Domestic Purchases -(LKR.)	382,045,293	452,544,538	355,532,379	323,125,658	571,655,786
Domestic Sales -(LKR.)	2,914,544,964	426,873,551	261,871,421	312,705,700	562,326,723
Foreign Purchases -(LKR.)	2,749,064,621	174,870,672	20,618,213	30,935,411	355,239,403
Foreign Sales -(LKR.)	216,564,951	200,541,659	114,279,170	41,355,369	364,568,466
Vol of Turnover	38,779,669	27,109,246	18,091,589	15,003,908	39,722,432
% Vol of foreign turnover	31.28%	8.36%	9.92%	7.25%	7.78%
Total no. of trades	5,100	6,490	4,771	4,673	7,387
Foreign % No. of trades	3.98%	5.45%	5.22%	3.42%	4.44%
Market Capitalization (LKR.)	1,998,137,333,918	1,985,142,727,111	1,974,283,180,653	1,961,670,418,532	1,988,300,910,283

“Even the intelligent investor is likely to need considerable will power to keep from following the crowd”

- Benjamin Graham -

“We simply attempt to be fearful when others are greedy and to be greedy only when others are fearful ”

- Warren Buffet -

ANNOUNCEMENTS

ASPH

RS. 1.50 INTERIM DIVIDEND

XD 27/3/2012

PAYMENT DATE 5/4/2012

RAL

RIGHTS ISSUE

**2 SHARES FOR EVERY 5 SHARES HELD AT RS. 4/- PER SHARE
SUBJECT TO APPROVAL**

KGAL

INTERIM DIVIDEND LKR 7.50 PER SHARE

XD 29/3/2012

PD 30/3/2012

NAMU

INTERIM DIVIDEND LKR 4.50 PER SHARE

XD 29/3/2012

PD 30/3/2012

TOP GAINERS	%
CONSTRUCTION & ENG	3.4%
INVESTMENT TRUST	3.4%
PLANTATIONS	2.5%
CHEMICALS & PHAR	0.4%

TOP LOSERS	%
SERVICES	7.8%
MOTORS	5.6%
FOOTWEAR & TEXTILES	2.8%
TELECOMMUNICATION	2.3%

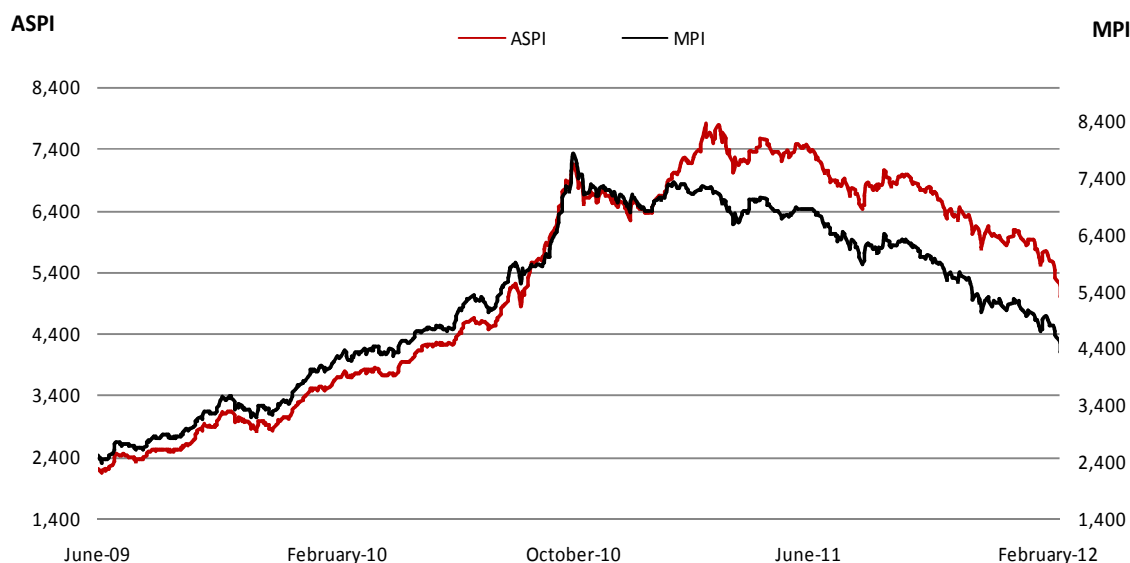
BARTLEET RELIGARE SECURITIES - WEEKLY SUMMARY

STOCKS IN FOCUS

	MPS (LKR)	MTD change %	YTD Change %	Historical EPS (LKR)	Trailing PER (x)	Forecasted EPS (LKR)	Forward PER (x)	DPS (LKR)	Dividend Yield (%)	NAV (LKR)	PBV (x)
Banks, Finance & Insurance											
CFIN	175.60	9.75%	-13.50%	18.22	9.64	25.76*	6.82	2.03	1.16%	120.98	1.45
CINS	725.00	5.85%	-2.91%	36.41	19.91	N/A	N/A	5.50	0.76%	357.76	2.03
CINS(X)	305.00	2.14%	-11.08%	36.41	8.38	N/A	N/A	5.50	1.80%	357.76	0.85
COMB	100.00	-0.10%	0.00%	10.08	9.92	N/A	N/A	4.00**	4.00%	54.52	1.83
COMB(X)	81.50	-3.78%	9.40%	10.08	8.09	N/A	N/A	4.00**	4.91%	54.52	1.49
DFCC	112.30	5.45%	-0.53%	7.48	15.01	10.81*	10.39	10.00	8.90%	94.49	1.19
HASU	48.40	4.09%	-14.94%	5.50	8.80	N/A	N/A	2.10	4.34%	32.19	1.50
HNB	150.00	-0.60%	-0.86%	16.64	9.01	N/A	N/A	4.50**	3.00%	107.25	1.40
HNB(X)	92.10	-3.05%	10.70%	16.64	5.53	N/A	N/A	4.50**	4.89%	107.25	0.86
LOLC	56.10	-6.34%	-32.65%	7.02	7.99	5.67*	9.89	0.28	0.50%	37.14	1.51
NTB	56.80	1.25%	-0.35%	6.73	8.44	N/A	N/A	3.50	6.16%	33.70	1.69
NDB	120.70	-5.33%	-12.60%	16.48	7.32	N/A	N/A	4.00	3.31%	104.07	1.16
PABC	23.40	-3.31%	-7.87%	2.79	8.39	N/A	N/A	1.00	4.27%	12.23	1.91
SAMP	187.10	-1.01%	-4.05%	26.43	7.08	N/A	N/A	4.50**	2.41%	133.27	1.40
SEYB	65.50	8.99%	-3.11%	3.29	19.91	N/A	N/A	1.00	1.53%	52.99	1.24
SEYB(X)	28.00	1.45%	-9.09%	3.29	8.51	N/A	N/A	1.00	3.57%	52.99	0.53
HDFC	70.40	-41.28%	-49.73%	4.79	14.71	N/A	N/A	0.50	0.71%	32.84	2.14
Beverage, Food & Tobacco											
CTC	509.50	3.87%	3.96%	35.07	14.53	47.02	10.84	34.60	6.79%	19.03	26.77
DIST	141.20	3.75%	-4.01%	14.46	9.76	14.00	7.43	2.25	1.59%	112.79	1.25
NEST	910.50	-0.49%	3.82%	35.19	25.87	50.32*	18.09	30.00	3.29%	50.77	17.93
Chemicals & Pharmaceuticals											
CIC	98.50	3.68%	-11.66%	9.80	10.05	10.70	11.95	1.85	1.88%	76.32	1.29
CIC(X)	65.10	-11.79%	-15.45%	9.80	6.64	10.70	7.90	1.85	2.84%	76.32	0.85
Construction & Engineering											
DOCK	245.00	3.99%	2.60%	30.40	8.06	23.00	10.65	8.00	3.27%	117.72	2.08
Diversified											
CARS	472.00	-4.1%	-12.8%	23.42	20.15	27.66*	17.06	2.00	0.42%	127.64	3.70
HAYL	364.00	3.9%	-2.9%	9.66	37.68	14.32*	25.42	4.00	1.10%	211.25	1.72
HHL	26.00	-12.5%	-21.2%	2.36	11.02	2.17*	11.98	0.70	2.69%	18.52	1.40
JKH	194.80	15.1%	14.5%	9.30	20.95	9.01*	21.62	3.00	1.54%	76.65	2.54
SPEN	115.00	1.8%	-4.5%	6.20	18.55	5.58*	20.61	1.00	0.87%	54.75	2.10
SUN	19.90	-20.7%	-31.4%	3.75	5.31	2.91	23.14	0.25	1.26%	16.55	1.14
CFLB	35.90	-12.2%	-26.7%	6.37	5.64	2.00*	17.95	-	0.00%	24.09	1.49
Health Care											
CHL	72.20	-7.44%	-15.06%	3.57	20.24	5.99	12.05	1.50	2.08%	63.33	1.14
CHL(X)	53.50	1.52%	-15.08%	3.57	15.00	5.99	8.93	1.50	2.80%	61.69	0.87
Hotels & Travels											
AHPL	78.00	9.86%	2.09%	4.01	19.45	3.76*	20.74	1.00	1.28%	33.73	2.31
AHUN	70.10	6.05%	0.86%	2.90	24.17	3.28	21.37	0.50	0.71%	28.32	2.48
BHR	94.00	-4.28%	-10.48%	(0.14)	N/M	-	N/M	-	0.00%	119.73	0.79
EDEN	30.30	-13.18%	-20.26%	1.92	N/M	2.01*	15.07	-	0.00%	27.24	1.11
KHL	12.60	12.50%	-6.67%	0.52	N/M	0.72*	17.50	-	0.00%	8.41	1.50
NEH	1,193.60	na	-20.43%	51.47	23.19	55.00*	21.70	2.50	0.21%	972.08	1.23
PALM	165.00	-28.82%	-28.82%	2.40	68.75	2.50	66.00	-	0.00%	181.77	0.91
SHOT	17.10	-32.41%	-40.63%	0.49	34.62	1.50*	11.40	-	0.00%	12.78	1.34
STAF	31.50	-12.50%	-26.74%	0.58	54.31	0.65*	48.46	0.50	1.59%	23.45	1.34
Manufacturing											
ACL	61.00	-12.48%	-17.57%	3.35	18.21	7.50*	8.13	-	0.00%	71.53	0.85
KCAB	62.40	-20.31%	-22.29%	5.71	10.93	10.00*	6.24	1.25	2.00%	83.57	0.75
LLUB	173.90	2.29%	2.29%	16.57	10.49	17.13	10.15	9.00	5.18%	26.32	6.61
LWL	71.40	-22.05%	-24.44%	11.44	6.24	9.75*	7.32	2.50	3.50%	69.80	1.02
RCL	118.50	-13.69%	-16.25%	11.67	10.15	15.54	7.63	3.25	2.74%	56.97	2.08
TKYO	39.10	-2.25%	-11.14%	2.64	14.81	3.50*	11.17	1.00	2.56%	20.29	1.93
TKYO(X)	26.40	-4.00%	-13.44%	2.64	10.00	3.50*	7.54	1.00	3.79%	20.29	1.30
Telecommunications											
DIAL	7.20	2.86%	-7.69%	0.65	11.06	1.00	7.20	0.25	3.51%	4.02	1.79
SLTL	46.60	-1.48%	-2.92%	2.65	17.58	N/A	N/A	0.85	1.82%	29.69	1.57
Plantations											
AGAL	41.50	0.97%	-16.67%	6.56	6.33	N/A	N/A	-	0.00%	37.85	1.10
KGAL	103.10	14.56%	-1.81%	33.66	3.06	20.45	5.04	3.00	2.91%	113.29	0.91
KOTA	65.00	9.06%	1.09%	19.87	3.27	9.16*	7.10	5.00	7.69%	70.85	0.92
KVAL	95.90	-4.10%	6.56%	12.96	7.40	N/A	N/A	5.00	5.21%	64.18	1.49
MAL	4.20	-10.64%	-23.64%	1.81	2.32	1.54*	2.73	0.10	2.38%	72.81	0.51
WATA	10.00	-20.00%	-29.58%	2.71	3.69	1.00*	10.00	0.28	2.75%	10.87	0.92
TPL	23.00	-19.30%	-22.56%	(3.90)	N/A	N/A	N/A	-	0.00%	42.37	0.54
Power & Energy											
UOC	21.00	24.26%	13.51%	1.65	12.73	1.94*	10.82	-	0.00%	18.92	1.11
HPWR	22.00	-5.17%	-17.60%	3.30	6.67	2.40*	9.17	1.3	5.91%	22.82	0.96

- Please note that the Historical EPS represents the EPS reported for the last FY ,adjusted for non recurring items, share splits, bonuses and share consolidations.
- * Annualized EPS
- ** Companies who have paid both cash and scrip dividends during the last FY. However, DPS here only represents cash dividend
- DPS figures represents per share dividend paid during the last FY and are adjusted for splits and bonus share issues

BARTLEET RELIGARE SECURITIES - WEEKLY SUMMARY



Contact:

Institutional Clients:

	Voice	E-Mail
Murali	5220201/212	murali@bartleet.com
Angelo	5220207/214	angelo@bartleetstock.com
Sujeewa	5220213	sujeewa@bartleetstock.com
Yadhavan	5220215	yadhavan@bartleetstock.com
Ahmadeen	5220218	ahmadeen@bartleetstock.com

Retail Clients:

	Voice	E-mail
Vajira	5220217	vajira@bartleetstock.com
Yusri	5220224	ymm@bartleetstock.com
Rasa	5220225	rasa@bartleetstock.com
Thenusha	5220219	thenusha@bartleetstock.com
Samith	5220209	samith@bartleetstock.com
Dhanushka	5220222	dhanushka@bartleetstock.com
Muditha	5220219	muditha@bartleetstock.com
Asitha	5220209	asitha@bartleetstock.com

If you don't follow the stock market, you are missing some amazing drama.

Stock Market bubbles don't grow out of thin air. They have a solid basis in reality, but reality is distorted by misconceptions.

As long as you enjoy investing, you'll be willing to do home work and stay in the game.

That's why we make the game so entertaining,

because if you aren't interested, you'll either miss the opportunity to make money in the market or not pay enough attention and end up losing your shirt.

Business Development:

	Voice	E-mail
Angelo	5220207/214	angelo@bartleetstock.com

Research:

	Voice	E-mail
Nikita		nikita@bartleetstock.com
Nusrath		nusrath@bartleetstock.com
Vajirapanie		vajirapanie@bartleetstock.com
Sahani		sahani@bartleetstock.com
Jennita		jennita@bartleetstock.com
Thilini		thilini@bartleetstock.com
Rakshila		rakshila@bartleetstock.com
Stefan		stefan@bartleetstock.com

Branches:

	Voice	E-mail
Kandy	81-5622779	bmskandy@slt.net.lk
Negombo	031-5310200	bmsnegombo@slt.net.lk
Matara	041-5410005	bmsmatara@slt.net.lk
Jaffna	021-2222849	bmsjaffna@slt.net.lk

BARTLEET RELIGARE SECURITIES - WEEKLY SUMMARY– PRICE LIST

SHARE PRICE LEVELS AS AT 23/03/2012						
STOCKS	OPEN PRICE	CLOSE PRICE	HIGH PRICE	LOW PRICE	PRICE CHANGE	VOLUME
CEYLINCO SEC&FIN SERV LTD. (W)	3.50	3.40	3.70	3.40	(0.10)	2,109,235
A.SPEN.HOT.HOLD.	70.00	70.10	72.00	70.00	0.10	22,257
ABANS	157.00	150.00	157.00	150.00	(7.00)	3,501
ABANS FINANCIAL SERVICES LTD.	42.90	42.90	42.90	42.90	0.00	1,000
ACL	61.00	61.00	61.00	61.00	0.00	5,140
ACME	19.00	20.10	20.50	19.00	1.10	39,533
AGALAWATTE	41.50	41.50	41.50	41.50	0.00	2
AGSTAR FERTILIZERS LTD.	13.10	12.70	13.20	12.50	(0.40)	3,600
AITKEN SPENCE & CO. LTD.	115.10	115.00	115.50	115.00	(0.10)	9,440
ALLIANCE	635.00	634.00	635.00	633.00	(1.00)	20
ALUFAB LTD.	23.00	26.80	26.90	23.00	3.80	600
AMANA TAKAFUL LIMITED(COMPANY)	1.80	1.90	1.90	1.80	0.10	1,632,115
AMAYA LEISURE PLC	84.00	84.00	84.00	84.00	0.00	100
ARPICO	100.00	88.00	100.00	88.00	(12.00)	51
ASIA ASSET FINANCE LTD.	4.00	4.00	4.10	3.90	0.00	166,046
ASIA CAPITAL	39.90	39.90	40.00	39.90	0.00	600
ASIAN ALLIANCE INSURANCE	86.60	86.60	86.60	86.60	0.00	1,200
ASIAN HOTELS PROPERTIES	78.20	78.00	78.20	78.00	(0.20)	141,607
ASIRI	7.90	8.00	8.00	7.90	0.10	19,329
ASIRI MEDICAL SERVICES	7.70	7.70	7.70	7.70	0.00	138
BAIRAHA FARMS	130.00	134.00	134.00	130.00	4.00	6,300
BALANGODA	22.00	22.00	22.80	22.00	0.00	30,100
BERUWELA WALKINN	115.00	115.00	115.00	115.00	0.00	200
BLUE DIAMOND JEWELLERY	2.60	2.80	2.90	2.60	0.20	3,402,983
BLUE DIAMONDS	5.80	6.20	6.30	5.80	0.40	9,903,004
BOGALA GRAPHITE	27.50	28.30	28.40	27.50	0.80	4,352
BOGAWANTALAWA	10.20	11.40	11.40	10.10	1.20	1,056
BROWNS	153.10	156.00	156.00	152.00	2.90	869
BROWNS BEACH	15.00	15.10	15.20	15.00	0.10	2,906
BROWNS INVESTMENT LIMITED.	3.30	3.50	3.60	3.30	0.20	112,778
BUKIT DARAH	845.00	859.10	875.00	835.00	14.10	402
C T LAND	24.60	25.20	26.00	24.60	0.60	4,800
C.W.MACKIE & CO.	73.50	74.90	75.00	73.50	1.40	1,235
CALTEX	173.00	173.90	175.00	172.90	0.90	5,698
CAPITAL ALLIANCE FINANCE LTD	37.90	38.20	38.50	36.90	0.30	93,000
CAPITAL REACH LTD	30.50	30.40	30.50	30.40	(0.10)	2,495
CARGILLS	172.00	175.50	175.50	172.00	3.50	45,980
CARGO BOAT	81.40	81.60	86.50	81.40	0.20	801
CARSONS	466.00	472.00	479.90	465.00	6.00	4,072
CDIC	300.00	300.00	300.00	300.00	0.00	110
CENTRAL FINANCE	175.00	175.60	178.50	175.00	0.60	13,900
CENTRAL IND.	65.20	73.00	73.60	65.20	7.80	2,201
CENTRAL INV & FINANCE LTD.	6.50	6.80	6.90	6.50	0.30	5,510
CENTRAL SEC.	10.00	10.10	10.10	10.00	0.10	5,300
CEY THEATRES	152.00	152.00	155.00	152.00	0.00	13,348
CEYLINCO HOUSING	14.80	15.40	15.50	14.70	0.60	24,579
CEYLINCO INS (NON VOT)	305.00	305.00	305.00	305.00	0.00	101
CEYLINCO INS.	700.00	725.00	745.00	700.00	25.00	42,820
CEYLINCO SEC.	10.50	10.60	10.80	10.50	0.10	354,050
CEYLON BREWERY	315.00	315.00	315.00	315.00	0.00	500
CEYLON GLASS CO.	5.70	6.00	6.00	5.70	0.30	238,801
CEYLON GUARDIAN	230.00	230.30	234.90	230.00	0.30	1,600
CEYLON INV.	80.10	80.70	81.60	78.30	0.60	11,773
CEYLON LEATHER PRODUCTS W	12.90	13.60	13.80	12.90	0.70	32,252
CEYLON LETHER PRODUCTS	92.50	94.50	96.40	90.00	2.00	13,200
CEYLON LETHER PRODUCTS	12.50	13.60	14.00	12.50	1.10	46,700
CEYLON TEA BROKERS PVT	4.90	4.90	4.90	4.90	0.00	25,000
CEYLON TOBACCO	509.50	509.50	509.50	509.50	0.00	300
CF VENTURE FUND	10.40	11.00	11.20	10.40	0.60	60,913
CFI	153.00	169.20	170.00	152.00	16.20	612
CFT	6.60	7.10	7.20	6.60	0.50	15,400
CHEMANEX	113.90	113.90	114.00	113.90	0.00	40
CHILAW FINANCE LTD.	15.70	15.40	15.70	15.20	(0.30)	9,179
CIC	95.00	98.50	100.00	95.00	3.50	19,280
CIC[NON VOT]	65.10	65.10	65.10	65.10	0.00	19
CIT	190.00	190.00	190.00	190.00	0.00	100
CITIZENS DEVELOPMENT BUSI	40.00	40.60	41.00	40.00	0.60	10,034
CITRUS LEISURE PLC.	30.10	31.50	34.00	30.10	1.40	148,990
COCO LANKA	50.00	50.10	51.00	50.00	0.10	3,492
COCO LANKA (X)	33.00	33.00	33.00	33.00	0.00	42
COL PHARMACY	730.00	753.40	795.00	700.00	23.40	1,791
COLD STORES	85.10	86.10	87.00	85.00	1.00	5,668
COLOMBO LAND	40.00	40.20	40.50	39.00	0.20	64,752
COLONIAL MTR	349.00	349.00	349.00	349.00	0.00	5
COMMERCIAL BANK	100.00	100.00	100.00	99.80	0.00	616,230
COMMERCIAL BANK[NON VOT]	80.90	81.50	82.00	80.80	0.60	62,604
COMMERCIAL CREDIT LIMITED.	15.10	15.70	15.80	15.10	0.60	28,929
COMMERCIAL DEV.	100.00	111.50	118.00	100.00	11.50	102
DANKOTUWA PORCELAIN LTD	15.40	17.40	17.60	15.40	2.00	106,298
DFCC	109.10	112.30	113.00	109.00	3.20	36,939
DIALOG TELEKOM LIMITED	7.30	7.20	7.30	7.20	(0.10)	133,601
DIMO	920.00	950.50	988.00	920.00	30.50	1,953
DIPPED PRODUCTS	94.00	100.00	100.00	94.00	6.00	36,599
DISTILLERIES	143.40	141.20	143.40	141.20	(2.20)	200

BARTLEET RELIGARE SECURITIES - WEEKLY SUMMARY– PRICE LIST

SHARE PRICE LEVELS AS AT 23/03/2012						
STOCKS	OPEN PRICE	CLOSE PRICE	HIGH PRICE	LOW PRICE	PRICE CHANGE	VOLUME
DOCKYARD	235.20	245.00	245.00	235.20	9.80	39,525
DURDANS HOSPITAL (NON VOT)	53.50	53.50	53.50	53.50	0.00	30
E-CHANNELLING LIMETED	5.50	6.00	6.20	5.50	0.50	251,481
EAST WEST	13.20	13.60	13.70	13.00	0.40	352,274
EASTERN MERCHANT	11.20	11.60	11.70	10.80	0.40	8,880
EDEN HOTEL LANKA	30.30	30.30	30.30	30.30	0.00	300
ELEPHANT LITE	7.90	8.00	8.00	7.60	0.10	20,600
ELPITIYA PLANTATIONS LTD	15.60	16.90	16.90	15.60	1.30	3,100
ENTRUST SECURITIES LIMITED.	24.90	25.10	25.90	24.90	0.20	7,281
ENVI. RESOURCES	15.00	16.80	17.10	15.00	1.80	1,415,515
ENVI. RESOURCES(W-3)	5.50	6.60	6.80	5.50	1.10	744,180
ENVI. RESOURCES(W-6)	5.20	6.60	6.90	5.20	1.40	682,389
EQUITY	35.80	35.80	35.80	35.80	0.00	1
EQUITY TWO LTD	25.00	26.30	27.00	25.00	1.30	4,601
EXPOLANKA HOLDINGS LIMITED.	6.50	6.60	6.70	6.40	0.10	704,529
FORT LAND	33.20	35.90	36.00	33.20	2.70	27,400
FREE LANKA CAPITAL HOLDINGS	2.00	2.10	2.10	1.90	0.10	1,469,702
GALADARI	18.60	20.00	20.40	18.50	1.40	5,808
GRAIN ELEVATORS	60.60	64.40	66.00	60.00	3.80	56,094
HAPUGASTENNE	35.80	32.10	35.80	32.10	(3.70)	102
HAYCARB	155.10	158.00	158.00	155.00	2.90	1,401
HAYLEYS	364.00	364.00	364.00	364.00	0.00	1
HAYLEYS KINTING LTD.	11.60	12.10	13.40	11.00	0.50	62,858
HDFC BANK LTD.	70.00	70.40	72.90	70.00	0.40	11,557
HEMAS HOLDING LTD.	25.50	26.00	27.00	25.50	0.50	13,401
HEMAS POWER LIMITED	22.60	22.00	22.60	22.00	(0.60)	47,591
HNB	151.00	150.00	151.00	150.00	(1.00)	849
HNB ASSURANCE	41.50	48.40	48.40	41.50	6.90	351
HNB[NON VOT]	93.00	92.10	93.00	92.00	(0.90)	105,017
HORANA	26.80	26.00	26.80	26.00	(0.80)	41
HOTEL REEFCOMBER(W18)	5.80	6.40	6.50	5.20	0.60	65,226
HOTEL REEFCOMBER(W19)	7.40	8.60	9.00	7.40	1.20	87,911
HOTEL SIGIRIYA	69.10	69.20	71.00	69.10	0.10	2,701
HOTELS CORP.	20.30	22.00	22.20	20.30	1.70	6,210
HUNAS FALLS	63.00	63.00	63.00	63.00	0.00	1,001
HUNTERS	354.00	361.40	365.00	354.00	7.40	821
HVA FOODS LIMITED	15.30	16.40	17.00	15.30	1.10	410,986
HYDRO POWER FREE LANKA	7.50	7.70	7.70	7.50	0.20	9,699
INDUSTRIAL ASPH.	410.00	410.00	410.00	410.00	0.00	1
INFRASTUCTURE	123.00	124.40	130.00	123.00	1.40	5,952
J.L. MORISON SON (NON VOT)	140.00	140.00	140.00	140.00	0.00	30
JANASHAKTHI INSURANCE	11.60	11.50	11.60	11.50	(0.10)	96,700
JKH	191.10	194.80	195.10	191.10	3.70	2,083,070
JOHN KEELLS	62.00	62.00	62.00	62.00	0.00	100
KAHAWATTE	28.00	28.90	29.30	27.50	0.90	4,970
KALPITIYA BEACH RESORT LTD	9.40	9.60	10.00	9.40	0.20	75,601
KANDY HOTELS	6.30	6.50	6.60	6.30	0.20	42,435
KAPILA HEAVY	24.00	25.00	25.50	24.00	1.00	88,419
KEELLS FOOD	103.80	103.80	103.80	103.80	0.00	1
KEELLS HOTELS LTD	12.40	12.60	12.70	12.30	0.20	19,371
KEGALLE	100.00	103.10	104.40	100.00	3.10	40,886
KELANI TYRES	26.30	27.90	28.70	26.30	1.60	8,855
KELANI VALLEY	92.50	95.90	96.00	92.50	3.40	100
KOTAGALA	65.00	65.00	67.50	65.00	0.00	13,600
LAKE HOUSE PRIN.	110.00	110.00	110.10	105.00	0.00	2,600
LAMBRETTA	40.70	40.50	40.70	40.20	(0.20)	400
LANKA ALUMINIUM	25.00	26.00	28.50	25.00	1.00	6,552
LANKA ASHOK	2,248.80	2,248.80	2,248.80	2,248.80	0.00	2
LANKA CEMENT	11.90	11.90	11.90	11.60	0.00	2,500
LANKA CERAMIC	70.00	70.10	70.10	70.00	0.10	5,100
LANKA HOSPITAL CORPORATION	31.10	33.10	33.20	31.00	2.00	50,397
LANKA IOC LIMITED	21.00	21.00	21.00	20.50	0.00	689,100
LANKA ORIX FINANCE CO LTD.	4.70	4.90	5.00	4.70	0.20	183,801
LANKA TILES	65.30	65.00	65.30	65.00	(0.30)	4,100
LANKA WALLTILE	70.00	71.40	76.00	70.00	1.40	3,393
LANKEM CEYLON	179.00	179.70	180.00	179.00	0.70	1,387
LANKEM DEV.	10.50	11.20	11.30	10.50	0.70	55,600
LAUGFS GAS LIMITED	25.50	26.20	26.40	25.50	0.70	15,101
LAUGFS GAS LIMITED (X)	16.00	16.40	16.60	16.00	0.40	153,400
LION BREWERY	198.00	200.00	200.00	198.00	2.00	89,529
LMF	98.00	98.00	98.00	98.00	0.00	28
LOLC	55.90	56.10	57.00	55.00	0.20	1,831
MAHAWELI REACH	22.90	23.00	23.90	22.90	0.10	2,200
MALWATTE (NON-VOT)	3.60	3.90	3.90	3.60	0.30	6,000
MALWATTE VALLEY PLANTATION	4.10	4.20	4.20	3.90	0.10	173,003
MARAWILA RESORTS	7.30	7.60	7.60	7.20	0.30	33,000
MASKELIYA	17.00	17.00	17.00	17.00	0.00	25
MERCHANT BANK	30.00	30.70	31.00	30.00	0.70	20,809
MET. RES. HOL.	19.00	19.00	19.00	19.00	0.00	1,226
MIRAMAR	119.90	119.90	119.90	119.90	0.00	5
MORISONS	240.00	240.00	240.00	240.00	0.00	40
MULLERS	1.90	1.90	2.00	1.80	0.00	163,150
MULTI FINANCE LIMITED.	27.00	27.70	29.40	27.00	0.70	9,801
NAMAL ACUITY VALUE FUND	60.00	60.00	60.10	58.00	0.00	3,075
						</

BARTLEET RELIGARE SECURITIES - WEEKLY SUMMARY- PRICE LIST

SHARE PRICE LEVELS AS AT 23/03/2012

STOCKS	OPEN PRICE	CLOSE PRICE	HIGH PRICE	LOW PRICE	PRICE CHANGE	VOLUME
NAMUNUKULA	59.50	60.30	62.70	59.40	0.80	3,280
NANDA INVESTMENTS & FINANCE	8.50	8.50	8.80	8.50	0.00	1,751
NAT. DEV. BANK	121.00	120.70	123.90	120.10	(0.30)	6,242
NATIONS TRUST	56.00	56.80	57.00	56.00	0.80	77,530
NAWALOKA HOSPITALS LIMITE	3.10	3.00	3.10	3.00	(0.10)	197,200
NESTLE	911.00	910.50	911.00	910.00	(0.50)	218
NUWARA ELIYA	1,189.00	1,193.60	1,199.00	1,189.00	4.60	241
ODEL LIMITED (N)	19.50	20.20	20.30	19.40	0.70	24,100
ON'ALLY	60.30	62.30	62.50	60.30	2.00	600
ORIENT GARMENTS LTD.	16.00	17.60	17.70	16.00	1.60	78,550
OVERSEAS REALTY	13.00	13.20	13.20	13.00	0.20	40,301
P. D. KEELLS	15.80	16.00	16.00	15.80	0.20	4,710
PAN ASIA BANKING CORPORAT	22.20	23.40	24.00	22.20	1.20	95,508
PANASIAN POWER LIMITED	2.60	2.70	2.80	2.60	0.10	283,800
PARQUET	16.80	16.80	16.80	16.80	0.00	1
PC HOUSE LTD	8.80	8.70	8.90	8.30	(0.10)	470,178
PC PHARMA LTD.	20.90	20.90	22.00	20.90	0.00	907,704
PDL	45.00	51.20	51.80	45.00	6.20	6,795
PEGASUS HOTELS	36.00	36.00	36.00	36.00	0.00	911
PEOPLE'S LEASING COMPANY LTD.	11.50	11.70	11.80	11.50	0.20	58,500
PEOPLE'S MERCH	13.10	13.30	13.30	13.10	0.20	5,302
PRINTCARE (CEY)	30.90	31.00	31.00	30.90	0.10	400
RADIANT GEMS	70.00	72.10	76.00	69.90	2.10	29,797
RAIGAM WAYAMBA SALTERNS	3.00	3.20	3.20	3.00	0.20	108,966
REGNIS	270.00	264.00	270.00	260.00	(6.00)	925
RENUKA AGRI FOODS LTD.	6.00	6.10	6.10	6.00	0.10	4,202
RENUKA CITY HOT.	213.00	219.20	219.50	213.00	6.20	3,300
RENUKA HOLDINGS (X)	26.90	27.30	27.30	26.90	0.40	2,000
RENUKA HOLDINGS LTD	36.00	38.00	39.50	36.00	2.00	2,000
RICH PIERIS EXP	20.00	20.00	20.00	20.00	0.00	2,996
RICHARD PIERIS	6.90	7.10	7.20	6.90	0.20	300,001
RIVERINA HOTELS	94.00	94.00	94.00	94.00	0.00	4
ROYAL CERAMICS	117.00	118.50	118.50	116.00	1.50	2,043
RUHUNU HOTELS	16.70	17.80	18.00	16.60	1.10	20,275
SAMPATH	187.00	187.10	188.50	187.00	0.10	37,386
SATHOSA MOTORS	235.00	235.00	235.00	235.00	0.00	1,600
SERENDIB HOTELS	25.00	25.50	27.80	25.00	0.50	33,501
SERENDIB HOTELS[NON VOT]	16.90	17.10	17.10	16.90	0.20	6,000
SEYLAN BANK	65.50	65.50	65.50	65.50	0.00	1
SEYLAN BANK LTD.(NON VOT)	27.00	28.00	28.00	27.00	1.00	22,766
SEYLAN DEVELOPMENT PLC	7.90	8.00	8.10	7.90	0.10	184,764
SEYLAN MERCHANT BANK	1.30	1.30	1.40	1.30	0.00	1,938,312
SEYLAN MERCHANT BANK(NON VOT)	0.50	0.40	0.50	0.40	(0.10)	1,159,059
SEYLAN MERCHANT LEASING	23.00	23.70	23.70	23.00	0.70	3,900
SHAW WALLACE	213.00	216.90	220.00	203.00	3.90	8,460
SIERRA CABLES LTD.	3.20	3.30	3.30	3.20	0.10	29,929
SIGIRIYA VILLAGE	68.00	68.00	74.50	68.00	0.00	150
SINGALANKA	75.00	81.30	82.00	75.00	6.30	148
SINGER FINANCE LTD.	17.00	17.60	17.80	17.00	0.60	27,500
SINGER IND.	220.00	219.90	220.00	219.90	(0.10)	298
SINGER SRI LANKA	102.00	106.90	107.00	102.00	4.90	10,803
SINHA PUTHRA FINANCIAL	98.00	98.00	98.00	98.00	0.00	100
SOFTLOGIC CAPITAL LTD.	13.60	15.50	15.70	13.20	1.90	22,904
SOFTLOGIC HOLDINGS LTD.	12.00	12.10	12.30	12.00	0.10	421,552
SOY FOODS	190.00	190.00	190.00	190.00	0.00	11
SRI LANKA TELECOM LTD.	46.00	46.60	47.00	46.00	0.60	5,185
STAFFORD	29.50	31.50	31.50	29.50	2.00	10,400
SUNSHINE TRAVELS	19.00	19.90	19.90	19.00	0.90	1,601
SWARNAMAHAL FINANCIAL	149.50	148.70	149.50	146.60	(0.80)	21,289
TAJ LANKA	30.60	30.80	31.80	30.60	0.20	1,200
TALAWAKELLE	23.00	23.00	23.00	23.00	0.00	5,056
TEA SMALLHOLDER	45.00	56.10	57.00	45.00	11.10	916
TESS AGRO LIMITED	2.60	2.80	2.90	2.60	0.20	313,166
TEXTURED JERSEY LANKA LTD.	7.30	7.40	7.60	7.30	0.10	98,010
THE FINANCE CO.	30.00	33.20	33.50	30.00	3.20	7,588
THE FINANCE CO.(NON VOT)	7.60	7.90	7.90	7.60	0.30	132,017
THREE ACRE FARMS	53.50	57.50	59.00	53.00	4.00	60,147
TOKYO CEMENT	38.60	39.10	39.10	38.00	0.50	500
TOKYO CEMENT (NON VOT)	26.60	26.40	27.10	26.30	(0.20)	29,125
TOUCHWOOD INVESTMENT LTD.	15.00	15.90	16.10	15.00	0.90	62,226
TRADE FINANCE & INV LTD.	15.00	15.00	16.00	15.00	0.00	19,691
TRANS ASIA	60.10	67.40	67.40	60.10	7.30	210
UDAPUSSELLAWA	30.50	30.50	30.50	30.40	0.00	7
UNION ASSURANCE	95.00	95.00	98.00	95.00	0.00	219
UNION BANK.	16.80	17.00	17.00	16.50	0.20	69,127
UNITED MOTORS	113.00	113.00	113.00	113.00	0.00	3,704
VALLIBEL FINANCE LIMITED	37.00	37.40	37.40	37.00	0.40	995,700
VALLIBEL ONE LIMITED.	19.70	20.20	20.30	19.20	0.50	272,295
VALLIBEL POWER ERATHNA	6.90	7.00	7.00	6.90	0.10	80,100
VIDUL LANKA	5.90	6.00	6.10	5.90	0.10	102,587
WASKADUWA BEACH RESORT LTD	9.10	9.60	9.60	9.10	0.50	1,800
WATAPOTA INVESTMENT	67.50	72.70	73.00	67.50	5.20	5,983
WATAWALA	9.70	10.00	10.10	9.70	0.30	1,600
YORK ARCADE	16.90	18.00	18.00	16.90	1.10	21,561

DISCLAIMER:

In compiling this report, Bartleet Religare Securities (Pvt) Ltd has made every endeavor to ensure its accuracy but cannot hold ourselves responsible for any errors that may be found herein. We further disclaim all responsibility for any loss or damage which may be suffered by any person relying upon such information or any options, conclusions or recommendations herein whether that loss or damage is caused by any fault or negligence in the part of Bartleet Religare Securities (Pvt) Limited.